



# GMT MONTHLY MEMBERSHIP PROGRESS REPORT

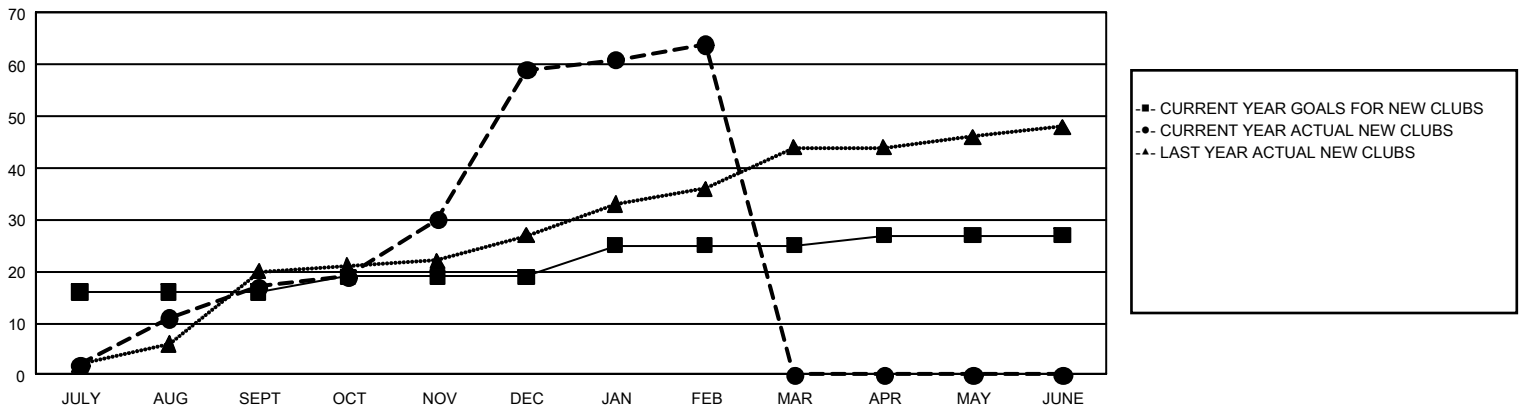
GAT Constitutional Area 5 - MD 300 Taiwan

Results as of: 2/28/2025

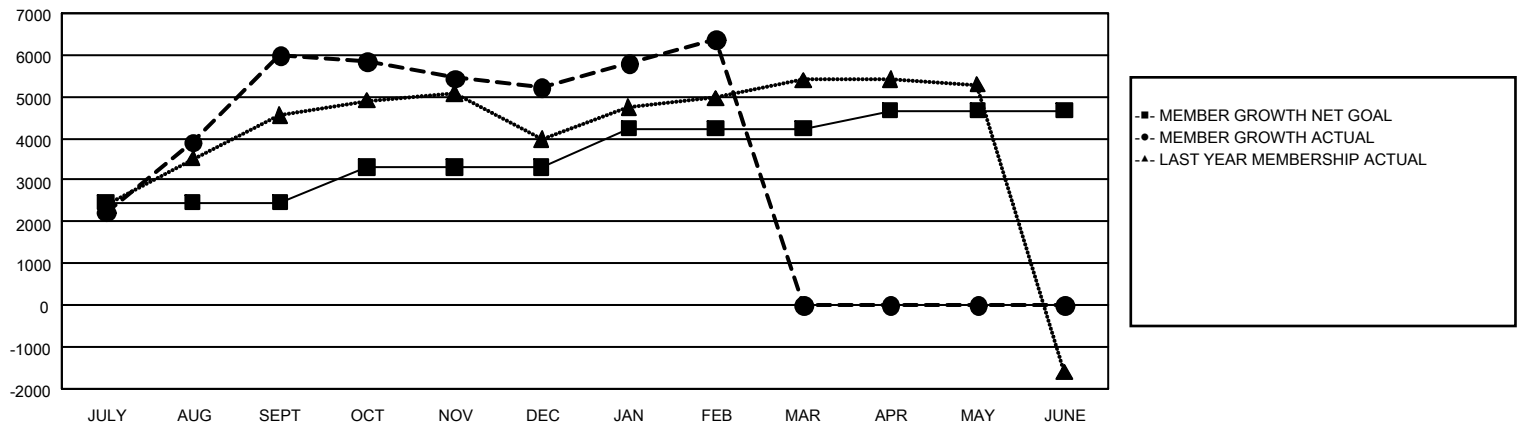
REPORT DOES NOT INCLUDE CLUBS IN UNDISTRICTED AREAS.

Clubs				Members			
RESULTS FOR 2024-2025				RESULTS FOR 2024-2025			
QUARTER	NEW CLUB GOAL	NEW CLUBS	DROPPED CLUBS	QUARTER	MEMBER GROWTH NET GOAL	MEMBER GROWTH ACTUAL	DROPPED MEMBERS ACTUAL (including transfers)
JULY/AUG/SEPT	16	17	5	JULY/AUG/SEPT	2,466	7,415	897
OCT/NOV/DEC	3	42	4	OCT/NOV/DEC	836	1,870	2,572
JAN/FEB/MAR	6	5	0	JAN/FEB/MAR	938	1,696	154
APR/MAY/JUNE	2	0	0	APR/MAY/JUNE	430	0	0

GOALS AND ACTUAL NEW CLUBS CUMULATIVE



GOALS AND ACTUAL MEMBERS CUMULATIVE



DROPPED CLUBS: 9

## DROPPED MEMBERS

DECEASED	68
CLUB CANCELLED	55
OTHER	3,493
TOTAL	3,616

1,109 CLUBS OF 1,268 ADDED 1 OR MORE NEW MEMBERS

[CLICK HERE FOR CUMULATIVE MEMBERSHIP DATA](#)

## GENDER DISTRIBUTION

MALE	30,860 (66.16%)
FEMALE	15,764 (33.80%)

TOTAL FAMILY UNIT MEMBERS	0
FAMILY MEMBERS PAYING HALF DUES	0